

# IQ58 / CKQ58

Programmable Incremental Series

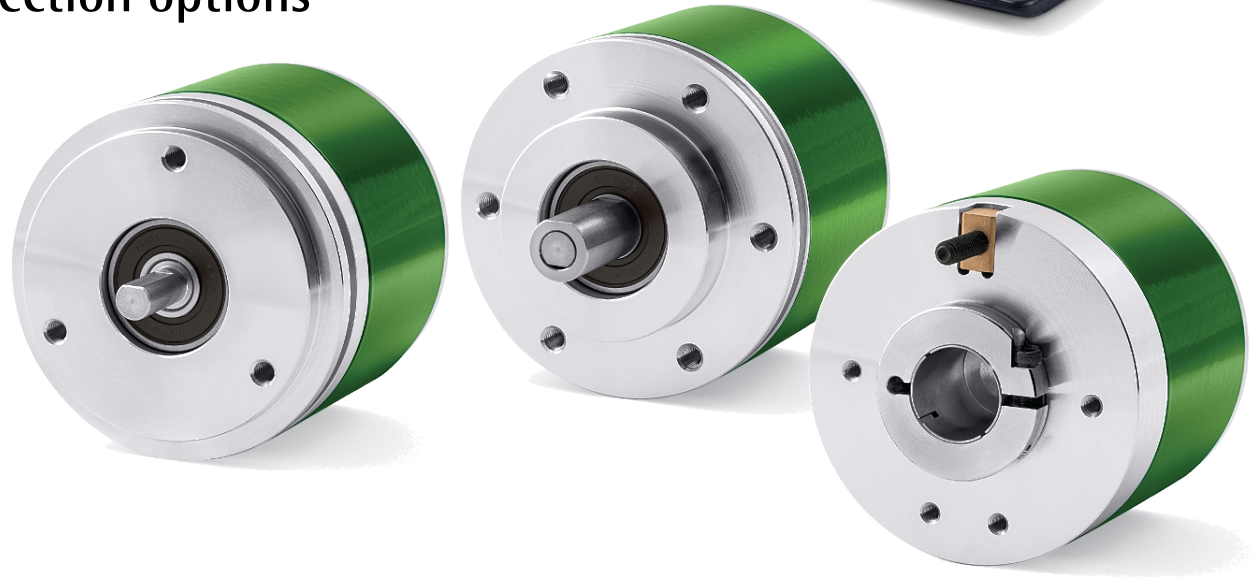
# Programmable characteristics



**IQ58 / CKQ58** series allows to program via Windows PC

- **resolution** from 1 to 16'384 PPR
- **index position**
- **index pulse width** (90° or 180°)
- **counting direction** (cw or ccw)

And it's available in a broad range of mechanical and connection options

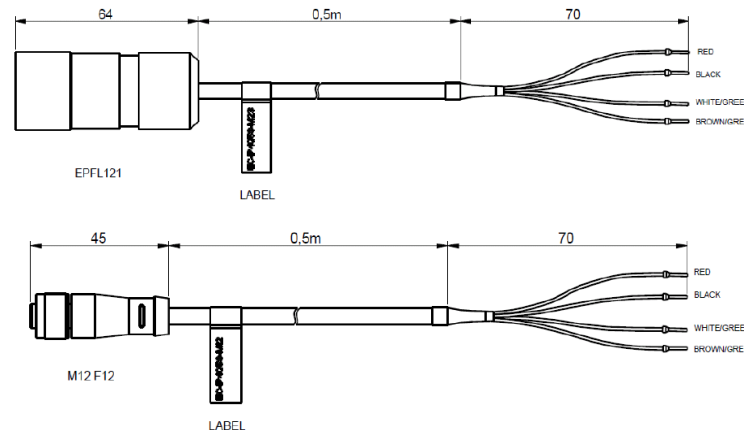
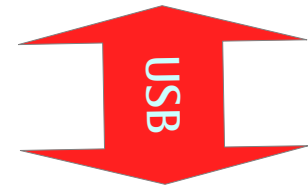


# Programming setup



All you need is

- any Windows PC (XP or later) with USB port
- programming KIT IP/IQ58
- eventual programming cable with mating M12/M23 connector
- programming interface & USB driver downloaded from Lika **IQ58 webpage**



# Programming interface

lika Encoder set up

**lika**

Interface type: KIT IP/IQ58 ✓ Connect

Encoder: IQ58, IQ58S, CKQ58 ✓ Connect

Internal pos. register: 0 ▶

Programmable parameters:

Resolution: 1024

Counting direction: CW

Index length: 90°el (gated A, B)

Index position: Set

Max rpm: 12000rpm (204KHz) best performance setting rpm/ edge distance filter

Encoder status: Read ✓ No error

Advanced diagnostics

Select and connect Encoder model  
Play to see Position info



Program parameters:

- Resolution
- Counting direction
- Index length
- Index Position

Basic & Advanced  
Diagnostic

# IQ58 vs IP58

..... **lika**<sup>®</sup>  
Smart encoders & actuators

Series	IQ58 • IQ58S • CKQ58	IP58 • IP58S • CKP58
		
Type	Incremental general-purpose for standard applications	Incremental top of the range for high-end and demanding applications
Sensing technology	Magnetic (with automatic calibration)	Optical
Resolution	Programmable 1 to 16,384 PPR	Programmable 1 to 65,536 PPR
Accuracy	±0,05° (tipica)	±0,005° (tipica)
Max. counting frequency	300 kHz	800 kHz
Output signals	ABO, /ABO	
Index (0, /0) position	Programmable at any position via software	Programmable at any position via either software or remote signal or external push-button
Output signals level	According to input voltage	Programmable according to input voltage or +5Vdc
Output circuit	Universal (HTL & TTL compatible)	
Power supply	+5Vdc +30Vdc	
Diagnostic LEDs	No	Yes
Protection rate	IP65	
Operating temperature range	-25°C +85°C / -13°F +185°F	Up to -40°C +100°C / -40°F +212°F
Configuration tool	KIT IP/IQ58 + USB connection cable	

# Contact



Smart encoders & actuators

**Lika Electronic Srl**

Via S. Lorenzo, 25  
36010 Carre' (VI) – Italy  
Tel. +39 0445 806600  
Fax +39 0445 806699  
eMail [info@lika.it](mailto:info@lika.it)  
web [www.lika.biz](http://www.lika.biz).

